

Ramsgrange Community School Leaving Certificate Programmes 2025



TUESDAY, FEB 4TH 2025
LCA CO-ORDINATOR: MAEVE WALSH

Senior Cycle Options



Senior Cycle Options

Junior
Cycle

Traditional Leaving
Certificate **With**
Leaving Certificate
Vocational
Programme(LCVP)

Transition year

Leaving Cert
Applied

FETAC Courses

(PLC Courses)

University

- Higher Certs.
- Ord. Degrees
- Honours Degrees

Apprenticeships

Note: LCA does NOT inhibit student progression to further education!

Different, NOT Less



Pre-LCA Introduction
One Size Fits ALL
Approach

What is Leaving Certificate Applied (LCA)?



- Established in 1995
- 2 Year, **self-contained**, programme
- It consists of continuous assessment over the 2 years
- The programme puts an emphasis on the holistic development of the student, recognising multiple intelligences -which the established Leaving Certificate has not recognised in the past.

LCA V'S Traditional LC



LCA

- **Work Experience** one day a week. 4 placements in 2 yrs.
- Practical/ project work
- Continuous assessment (Tasks/Key assignments)
- In-class support
- Irish/French completed in one year [*Exam @ end of LCA1]
- No homework

Traditional LC

- LCVP work experience one week in 5th year only
- Academic/points orientated
- LC exam counts for majority of marks
- Less in-class support
- Irish compulsory for 2 years
- Homework and Study

Rationale for LCA



1. Preparation for **working life/ further study**.
2. Recognises **talents of all learners** - aptitudes, abilities, needs and interests.
3. Provides opportunity to develop responsibility, **self-esteem** and self-knowledge.
4. Develops **communication and decision-making** skills.
5. Helps learners achieve a more **independence**
6. **Real World** life experience

Who would benefit from the Programme?



LCA is intended to meet the needs of:

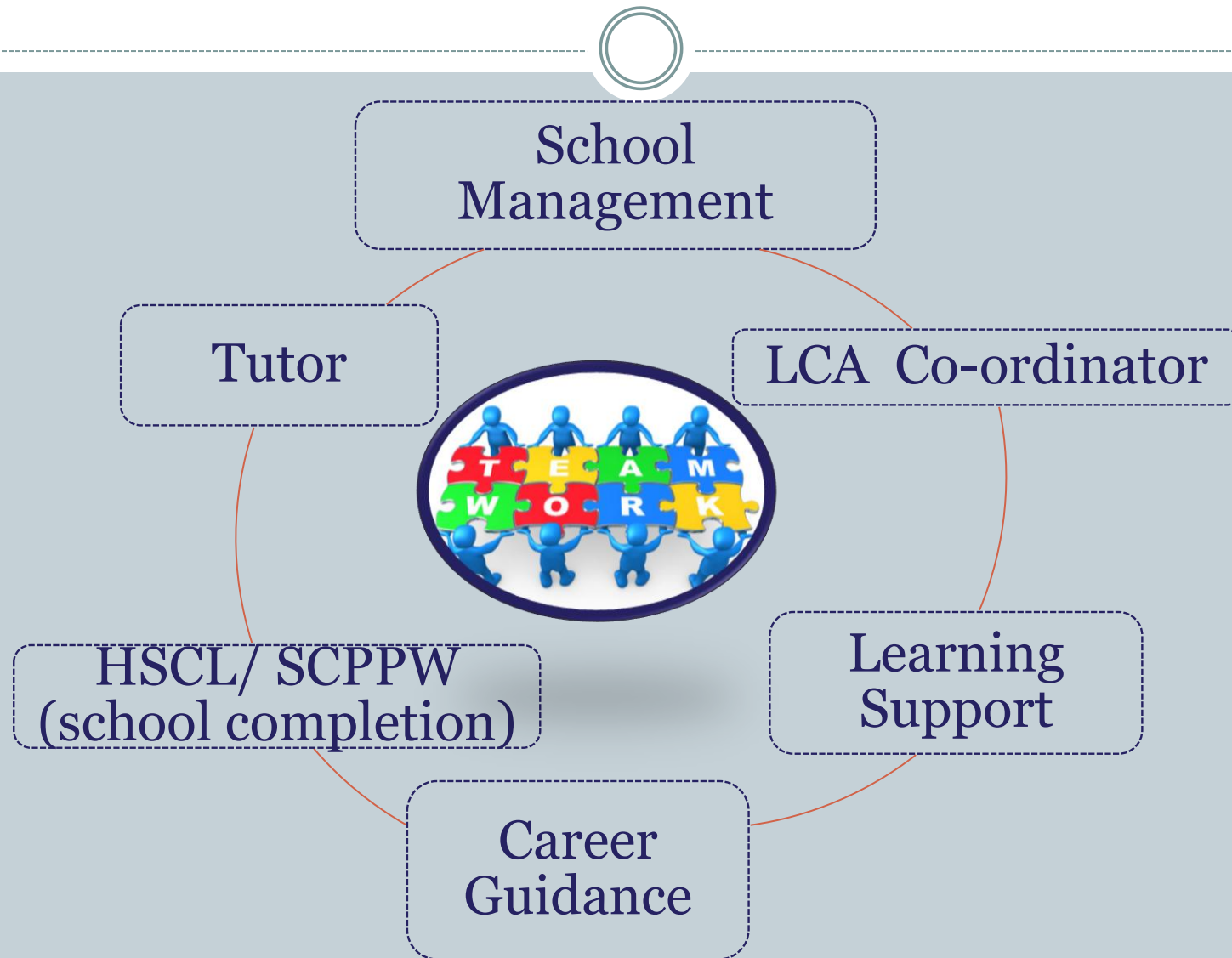
**Those students
who are not adequately catered
for
by other LC programmes**

Who would benefit from the Programme?



- Students who would take all ordinary level subjects at Leaving Cert. aspiring to a grade D (O6 40-49%):
12 points x 6 subjects = 72 points (WIT HC in Business = 200 points)
- ◉ Students who find difficulty with learning by rote rather than learning by doing.
- ◉ Students who have difficulty with essay type answers.
- ◉ Students with poor attention span and retention skills.
- ◉ Highly anxious students

Support for the LCA student



Student of the Year 2020; Craig Bradley



While the LCA programme is a separate programme to traditional LC, the LCA students are very much part of the whole school community in RCS

Programme Outline



The programme is divided into half year blocks called '**sessions**' of which there are **four** over the two year programme.

Students are assessed on their work in **January** and **May of each year** when a session ends

- LCA1: Sept- Jan= session 1
- LCA1: Feb- June= Session 2
- LCA2: Sept- Jan= Session 3
- LCA2: Feb- June= Session 4

In Ramsgrange CS we offer our LCA students a variety of subjects under the following different headings...

Vocational Preparation

- English
- Job Search & Guidance

Vocational Education

- Maths
- I.C.T.

2 of the following:

- Hotel, Catering and Tourism
- Active Leisure Studies
- Childcare
- Engineering

General Education

- Art/Drama
- **Irish (Year 1)/
French (Year 2)
- Social Education
- PE
- Religion

****students can retain exemptions from Irish**

(note: exam in June of LCA1)

Do LCA students receive a Leaving Certificate?

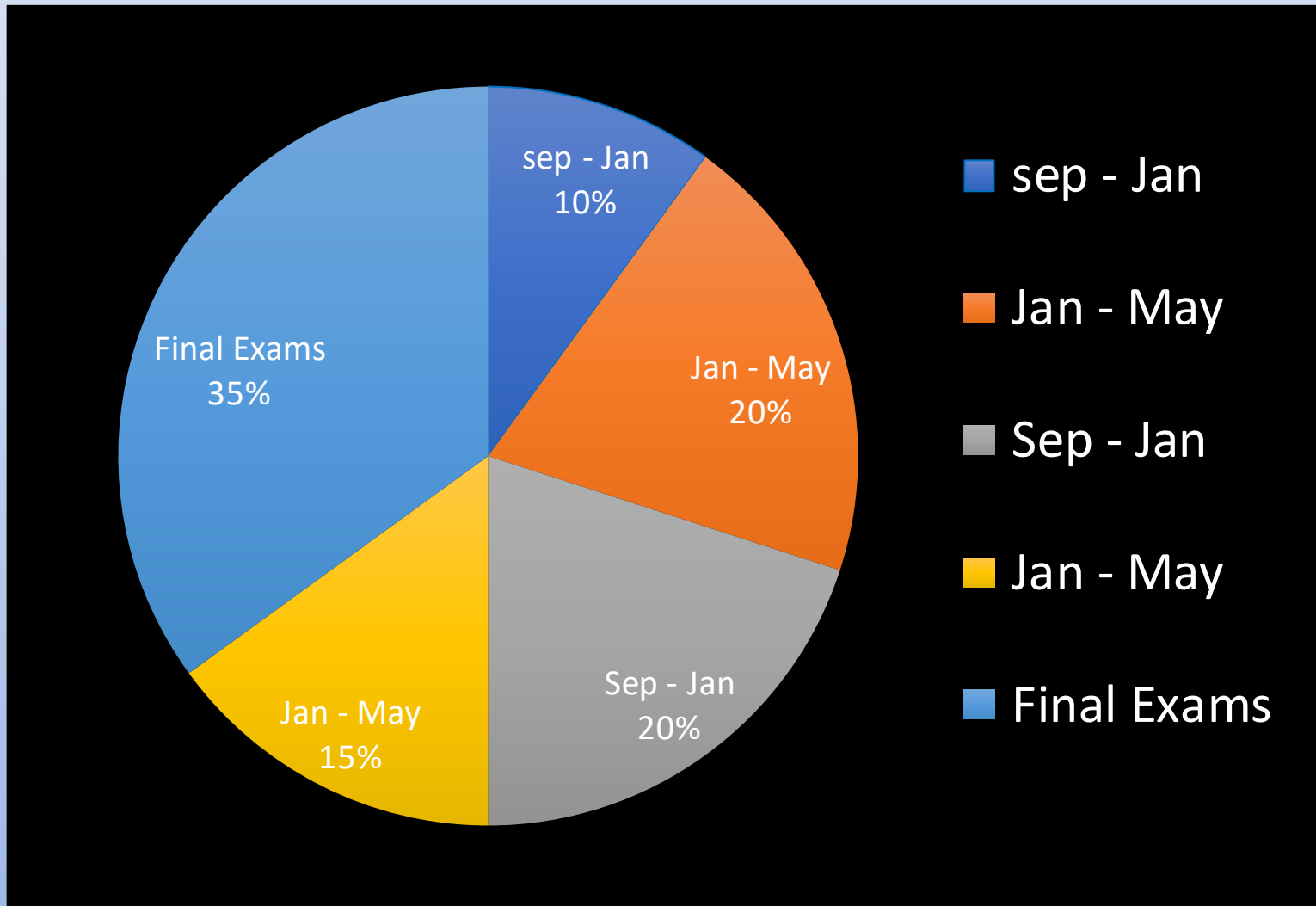


- **Yes.** Students who successfully complete the programme will receive a Leaving Certificate from the State Examinations Commission.

THE LEAVING CERTIFICATE APPLIED ASSESSMENT TAKES PLACE OVER THE TWO YEARS UNDER 4 HEADINGS:

- A. Satisfactory Completion of **Modules****
 - B. Performance of Student **Tasks****
 - C. Performance in the Terminal **Examinations.****
 - D. **90% attendance** in all subjects**
- All credits awarded will be recorded on the Leaving Certificate Applied parchment.

Assessment progress



Students are motivated by continuous assessment



LCA Modes of Assessment



Satisfactory completion of modules + 90% attendance					62 credits	30%
<ul style="list-style-type: none"> Evidence of completion of 4 key assignments for each module One credit per course module in which there is a final exam Two credits per course module in which there is NO final exam 						
7 Student tasks @ 10 credits each					70 credits	35%
<i>Vocational Preparation</i>	<i>Vocational Education (x2)</i>		<i>General Education</i>			
<i>Contemporary Issue</i>	<i>Personal Reflection</i>		<i>Practical Achievement</i>			
Final examinations					68 credits	35%
English & Communication	Vocational Specialisms (x2)	Languages (x2)	Social Education	Mathematical Applications		
12 credits	12 credits each	6 credits each	10 credits	10 credits		
Total					200 credits	100%

LCA Certification

Certificate awarded at 3 levels

Pass	120 - 139 credits	60-69%
Merit	140 - 169 credits	70-84%
Distinction	170 - 200 credits	85-100%

Students who acquire less than 120 credits or who leave the programme early will receive a “Record of Experience”.

How to apply for LCA?



- **LCA application form** - deadline for applications for LCA and TY programmes is February 11th, 2025
- Week of March 3rd- LCA Interviews take place
- Acceptance of LCA place offered in writing (form will be sent out)
- **Code of behaviour** ...Only students who we feel will benefit most from the course will be considered.
- Unsuccessful applicants may **appeal to BOM**
- Access this power point presentation on **our school website**

Student Evaluation



“LCA is good because when I was in a big class I didn’t have as much one- to- one communication with teachers as I do in LCA. I think you learn a lot more and get more confidence”

Student Evaluation

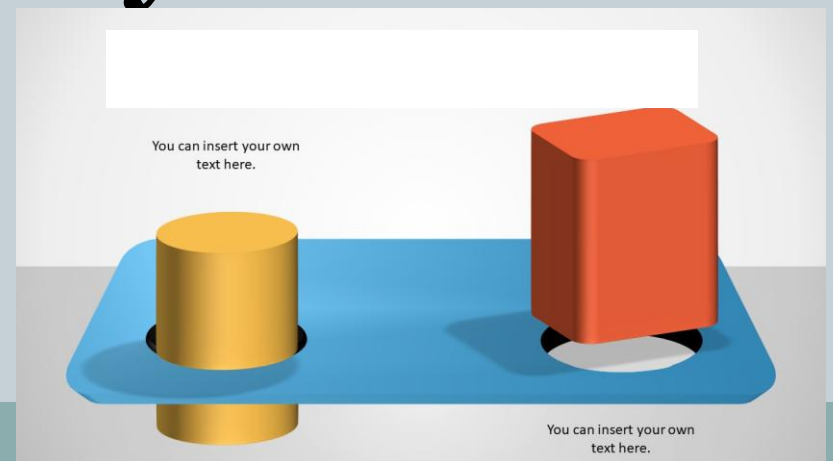


“I Find LCA brilliant because you still do work, but it’s explained more clearly and we do a lot of typing instead of writing, which is much better”

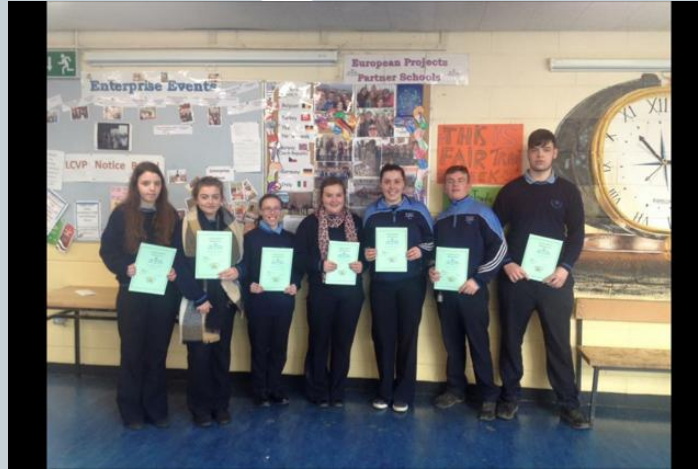
Student Evaluation



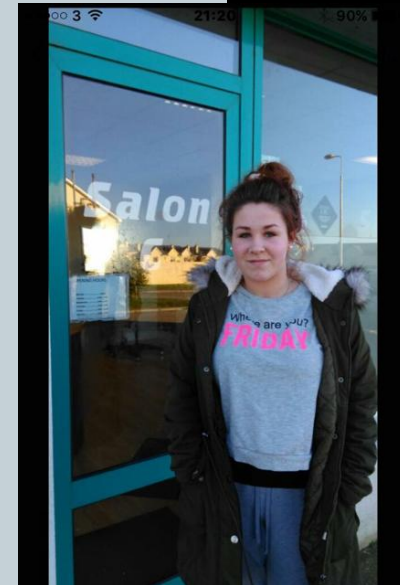
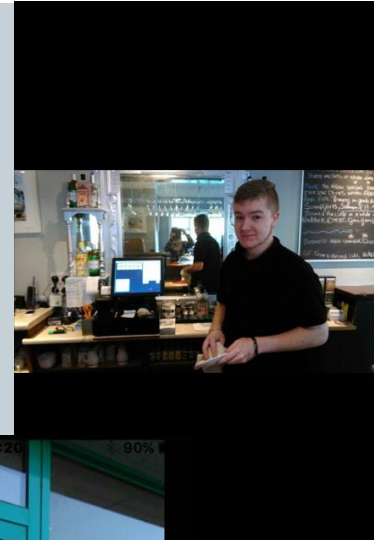
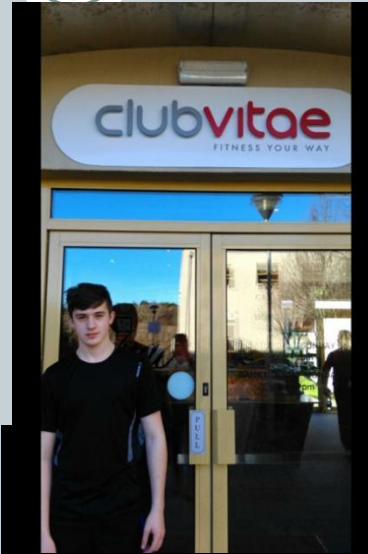
“LCA is better than I expected, I feel that I can be myself”



Celebrating LCA Success



Students on Work Experience



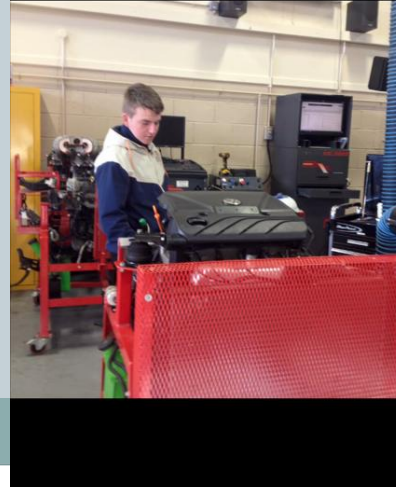
LCA Activities



LCA Activities



LCA Activities





**THANK YOU
FOR
YOUR
ATTENTION!
ANY QUESTIONS?**