

Ramsgrange Community School

Leaving Certificate Programmes

2023/2024



WEDNESDAY, FEB 22ND, 2023
LCA CO-ORDINATOR: MAEVE WALSH

Senior Cycle Options



Senior Cycle Options

Junior
Cycle

Traditional Leaving
Certificate **With**
Leaving Certificate
Vocational
Programme(LCVP)

Transition year

Leaving Cert
Applied

FETAC Courses

Institutes of
Technology

- Higher Certs.
- Ord. Degrees
- Honours Degrees

University
Honours Degrees

Apprenticeships

Note: LCA does NOT inhibit student progression to further education!

Different, NOT Less



Pre-LCA Introduction
One Size Fits ALL
Approach

What is Leaving Certificate Applied (LCA)?



- The Leaving Certificate Applied is a distinct, self-contained two-year programme **(operates separately to traditional LC)**
- The aim of LCA is.... to “*prepare students for adult and working life*”. **(skills/interviews/work placement)**
- It consists of Continuous assessment over the 2 years
- The programme puts an emphasis on forms of achievement and excellence, which the established Leaving Certificate has not recognised in the past. **(Holistic development of the student/Multiple Intelligences)**

LCA V'S Traditional LC



LCA

- **Work Experience** one day a week. 4 placements in 2 yrs.
- Practical/ project work
- Continuous assessment (Tasks/Key assignments)
- Small class sizes more one to one tuition – Team Teaching, SNA
- Irish/French completed in one year [*Exam @ end of LCA1]

Traditional LC

- LCVP work experience one week in 5th year only
- Academic/points orientated
- LC exam counts for majority of marks
- Generally bigger classes
- Irish compulsory for 2 years

Why would you do LCA?



1. Preparation for **working life**. Recognises **talents of all learners** - aptitudes, abilities, needs and interests.
2. Provides opportunity to develop in terms of **responsibility, self-esteem and self-knowledge**.
3. Develops **communication** and **decision making** skills.
4. Helps learners achieve a more **independent** and enterprising approach to learning and to life.
5. helps students **apply** what they learn in the **real world**.

Who would benefit from the Programme?



- LCA is intended to meet the needs of:

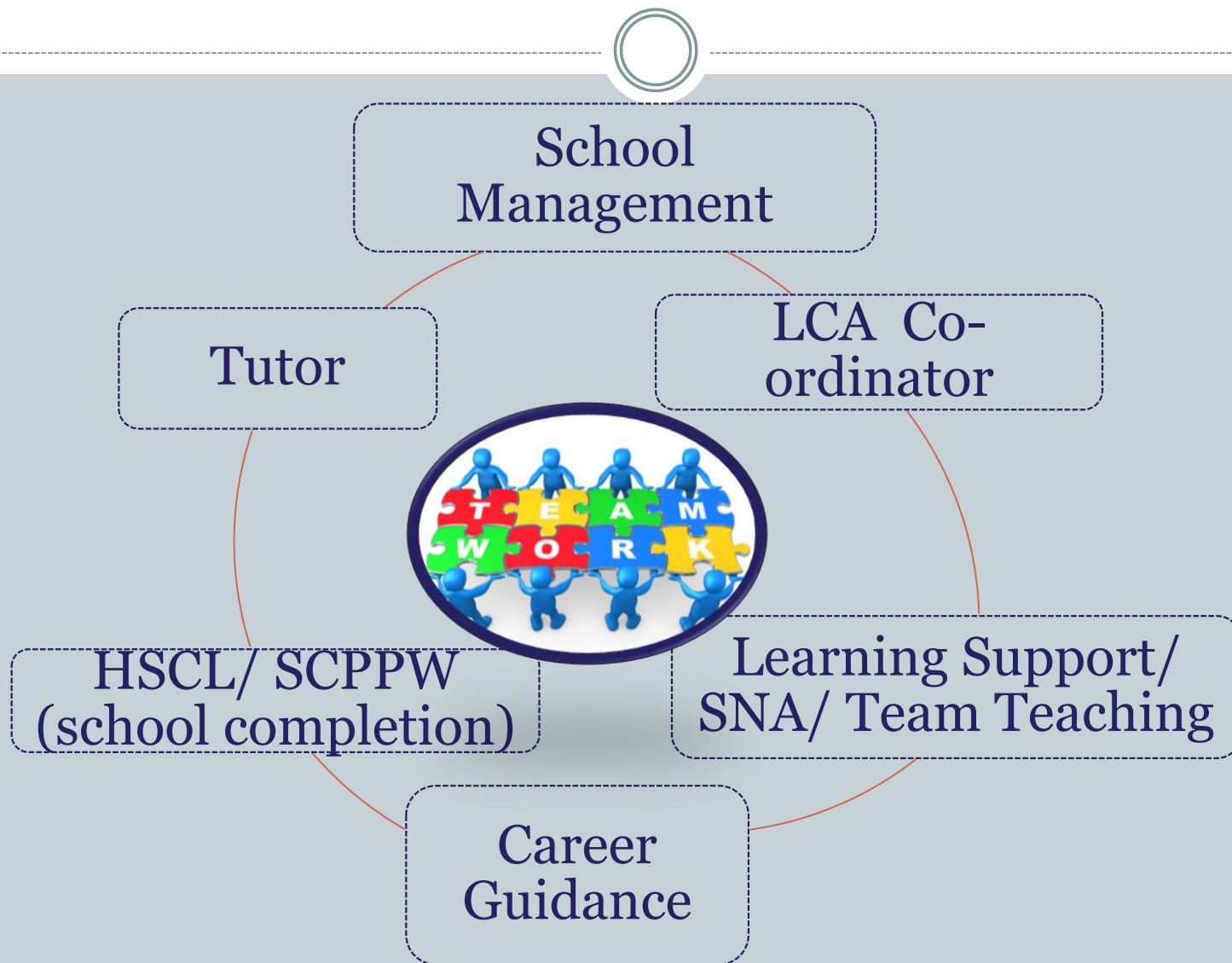
Those students who are not adequately catered for by other LC programmes

- Students who would take all ordinary level subjects at Leaving Cert. aspiring to a grade D (O6 40-49%):

12 points x 6 subjects = 72 points (WIT HC in Business = 200 points)

- Students who find difficulty with learning by rote rather than learning by doing.
- Students who have difficulty with essay type answers.
- Students with poor attention span and retention skills.
- Highly anxious students

Support for the LCA student



Programme Outline



The programme is divided into half year blocks called '**sessions**' of which there are **four** over the two year programme.

Students are assessed on their work in **January** and **May of each year** when a session ends

- LCA1: Sept- Jan= session 1
- LCA1: Feb- June= Session 2
- LCA2: Sept- Jan= Session 3
- LCA2: Feb- June= Session 4

In Ramsgrange CS we offer our LCA students a variety of subjects under the following different headings...

Vocational Preparation

- English
- Job Search & Guidance

Vocational Education

- Maths
- I.C.T.

2 of the following:

- Hotel, Catering and Tourism
- Office Admin*
- Childcare
- Graphics & Construction

General Education

- Art/Music
- **Irish (Year 1)/
French (Year 2)
- Social Education
- PE
- Horticulture

****students can retain
exemptions from Irish**

(note: exam in June of LCA1)

Do LCA students receive a Leaving Certificate?



- **Yes.** Students who successfully complete the programme will receive a Leaving Certificate from the State Examinations Commission.

THE LEAVING CERTIFICATE APPLIED ASSESSMENT TAKES PLACE OVER THE TWO YEARS UNDER 4 HEADINGS:

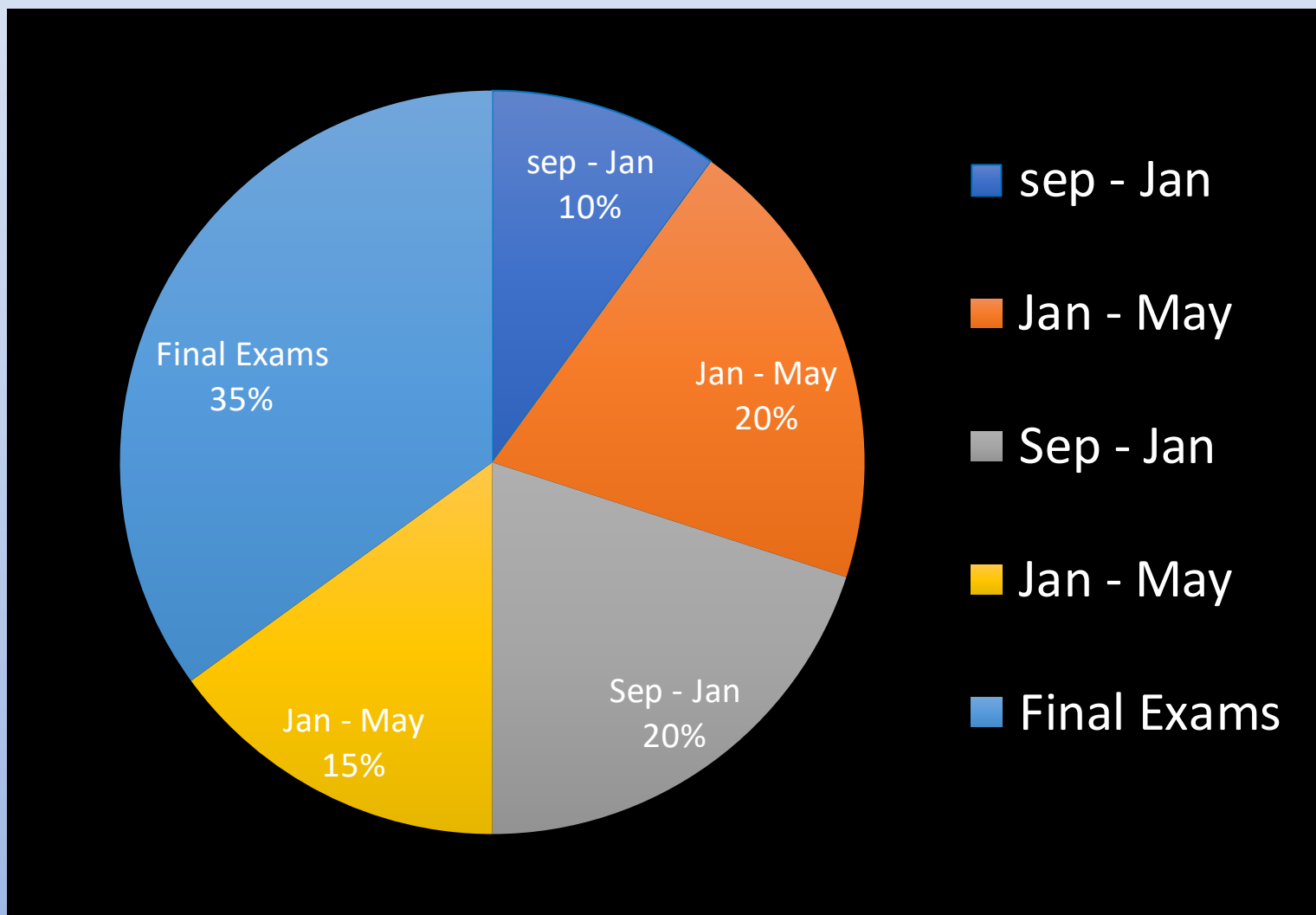
- A.** Satisfactory Completion of **Modules**
 - B.** Performance of Student **Tasks**
 - C.** Performance in the Terminal **Examinations.**
 - D.** **90% attendance** in all subjects
- All credits awarded will be recorded on the Leaving Certificate Applied parchment.

LCA Modes of Assessment



Satisfactory completion of modules + 90% attendance					62 credits	30%
<ul style="list-style-type: none">•Evidence of completion of 4 key assignments for each module•One credit per course module in which there is a final exam•Two credits per course module in which there is NO final exam						
7 Student tasks @ 10 credits each					70 credits	35%
Vocational Preparation		Vocational Education (x2)		General Education		
Contemporary Issue		Personal Reflection		Practical Achievement		
Final examinations					68 credits	35%
English & Communication	Vocational Specialisms (x2)	Languages (x2)	Social Education	Mathematical Applications		
12 credits	12 credits each	6 credits each	10 credits	10 credits		
Total					200 credits	100%

Assessment progress



Students are motivated by continuous assessment



Engineering Tasks 2023- Interviews Completed!!!



Final Examinations



Area	Credits
English & Communication Oral and written incorporating audio visual	12
Vocational Specialisms (x2) Practical and written – practical briefs issued in advance Graphics and Construction Studies or Childcare Engineering or Hotel, Catering and Tourism	12 each
Languages (x2) [Irish LCA1/ French LCA2] Oral and written incorporating aural **French exam June 2019	6 each
Social Education Written incorporating audio	10
Mathematical Applications Written – research topic (Q. 2. issued in advance)	10
Total	68

LCA Certification

Certificate awarded at 3 levels

Pass	120 - 139 credits	60-69%
Merit	140 - 169 credits	70-84%
Distinction	170 - 200 credits	85-100%

Students who acquire less than 120 credits or who leave the programme early will receive a “Record of Experience”.

How to apply for LCA?



- **LCA application form** - deadline for applications for LCA and TY programmes Wednesday March 1st 2023
- 7th /8th/9th March TY & LCA Interviews
- 21st March acceptance of places in TY & LCA
- **Code of behaviour** ...Only students who we feel will benefit most from the course will be considered.
- Unsuccessful applicants may **appeal to BOM**
- Access this power point presentation on **our school website**

Student Evaluation



“LCA has changed my opinion on education completely, with LCA it’s like a weight off my shoulders. It’s a calm environment, I feel like I have a life”

Student Evaluation



“I feel that I am a different person now, to the person who started LCA1, in a really positive way”

Student Evaluation



“I found that LCA helped a lot with my motivation for school, I actually put in the effort to be here”

Student Evaluation



“LCA is good because when I was in a big class I didn’t have as much one- to- one communication with teachers as I do in LCA. I think you learn a lot more and get more confidence”

Student Evaluation



“LCA is a program that I really enjoy, it is a practical type of Leaving and we all get along so well”

Student Evaluation

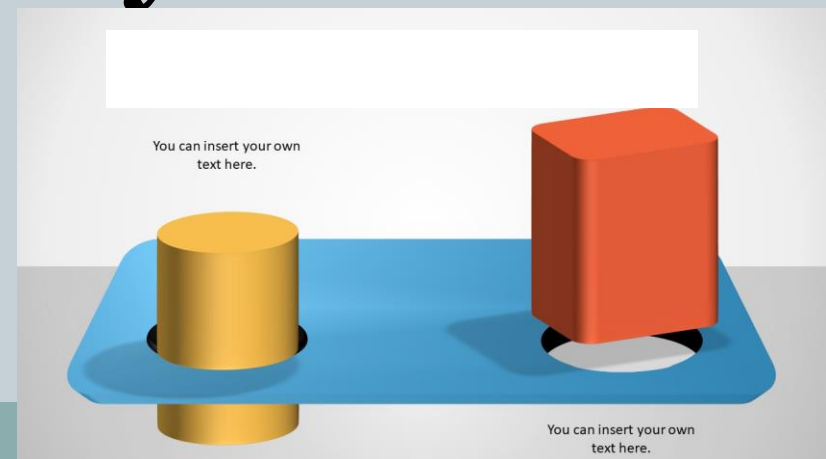


“I Find LCA brilliant because you still do work, but it’s explained more clearly and we do a lot of typing instead of writing, which is much better”

Student Evaluation



“LCA is better than I expected, I feel that I can be myself”



Student of the Year 2020; Craig Bradley

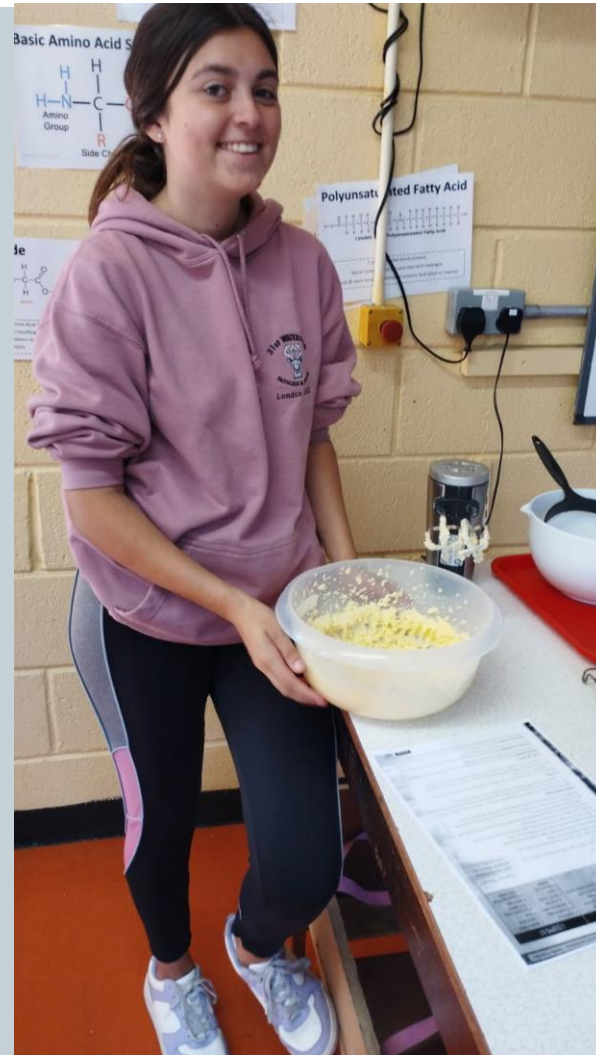


While the LCA programme is a separate programme to traditional LC, the LCA students are very much part of the whole school community in RCS

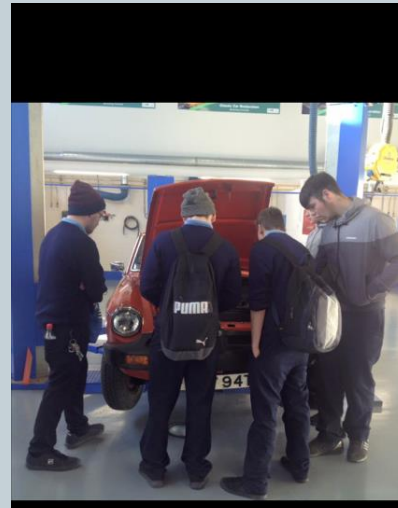
LCA Activities



LCA Activities



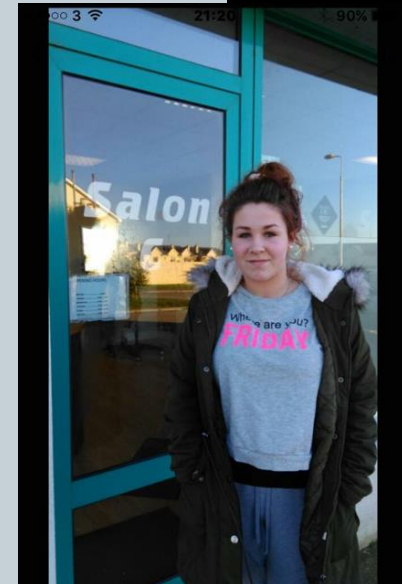
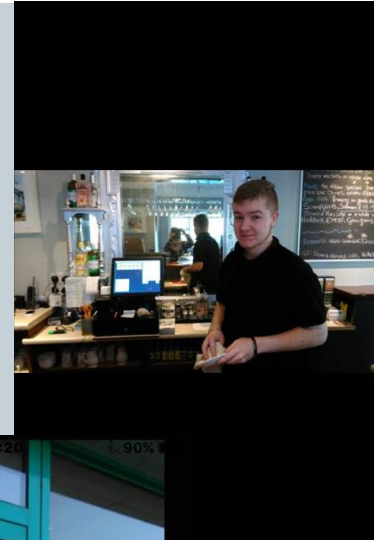
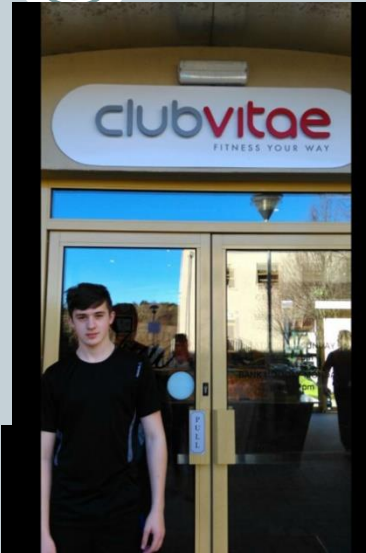
LCA Activities



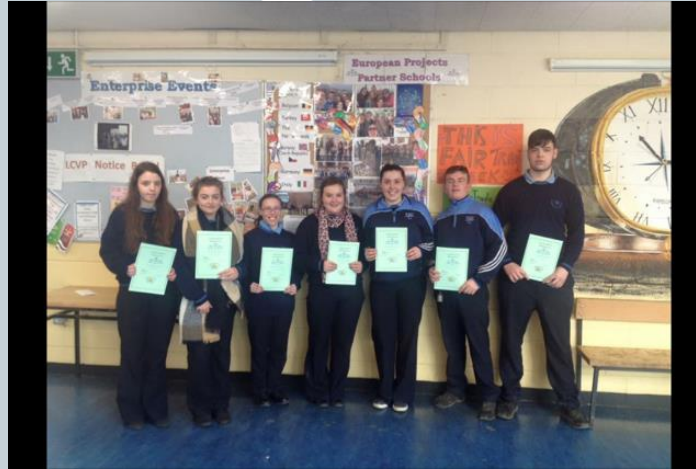
LCA Activities



Students on Work Experience



Celebrating LCA Success





**THANK YOU
FOR
YOUR
ATTENTION!
ANY QUESTIONS?**